



University of
Zurich^{UZH}

UZH PRC
Population Research Center

Population Research Center Dialogue

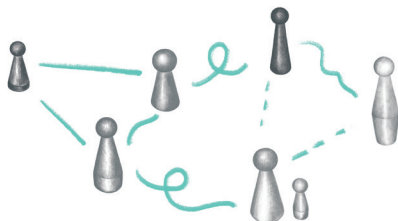
Prof. Laura C. Rosella

Canada Research Chair in Population
Health Analytics
University of Toronto



Artificial intelligence and public health

The role of data and analytics has never been more important in society and, in particular, for informing public health decisions. There has been a rapid change in the nature of data used in epidemiologic research and an increased focus on the use of Artificial Intelligence (AI) in the analysis of those emerging data sources. There are many conflicting points of view on the utility of AI in an epidemiologic context and a lack of clarity on the implications for the discipline and public health more generally. This talk will cover the myths, the debates, and the skepticism (from all sides) and outline a proposed direction for the role of AI in the future of public health. We will additionally cover the intersection of AI with a precision public health frame and the potential impact and unintended consequences of this framing. The talk will include implications related to bias, health equity, surveillance and causal inference. The talk will conclude by summarizing the implications for epidemiology research and training.



Tuesday, September 19, 2023, 16:30h
DSI, Schrödinger room, Rämistr. 69, Zürich

An event associated with the DSI AI WEEK